



## Beachside Retreat West Inlet - Stanley - Tasmania - Australia



Imagine a secluded, waterfront hideaway and nature retreat, with kilometres of absolute private beach frontage, where you can relax, unwind and breathe the cleanest air in the world.

Discover this contemporary retreat offering stunning, environmentally designed eco and nature cabins, discreetly sited amongst the natural foreshore vegetation of West Inlet. These unique, beachfront cabins cater for couples. A larger party can enjoy a spacious lodge, adjacent to the homestead.

Stay awhile and escape to this 'Land for Wildlife' and Maine-Anjou cattle property, an ideal base from which to discover Tasmania's north west.

### Stay in Luxury in Self Catering Accommodation

Even before stepping inside one of these cabins you realize this accommodation is out of the ordinary; nestled in the sand dunes, yet only minutes away from the historic, fishing village of Stanley. Reminiscent of the early Australian beach shack, these luxury contemporary beach houses - one with its own outdoor spa pool - are all about privacy, quality and a secluded beachfront magic; rare havens in a busy world. Ultra contemporary design is also reflected inside; stylish decor, showcasing craftsman made furniture from Tasmanian rain forest timbers, made in our family gallery - the Stanley Artworks.



### Enjoy The Natural Experiences and 4 Wheel Drive Tours



Enter this fascinating world of the seashore; explore the deserted beach, wind in your hair, golden sand between your toes, not a soul in sight. Collect wild oysters, swim in the crystal-clear waters, fish or beach comb; marvel at sea eagles soaring overhead. For a twitcher, this is a bird watching paradise.

Enjoy hosted Nature Tours of the property and see our unusual French breed of cattle. Visit the wetland in spring to hear the diverse frog calls.

For added excitement, experience an exhilarating helicopter flight, over the coastline or into the Tarkine wilderness direct from the property.

Take a 4 WD tour into the rain forests and the Rocky Cape National Park.



## Luxury Cabin Accommodation



### Deluxe Ecocabins - Oystercatcher and Sandpiper

For couples only, the award winning, contemporary-style ecocabins are situated on the sand dunes overlooking the sea. Each environmentally designed cabin is self contained with one queen-sized bedroom and an under-water themed bathroom with shower and toilet. Heating, hot water and cooking are provided by gas for guests to self-cater. The lounge/dining area has glass sliding doors leading onto a private deck with magnificent ocean views. At night, view the wildlife around the cabins from the large porthole window. Wheelchair accessible.

For one couple only; unsuitable for children/infants.



### Luxury Studio Nature Cabin - Pelican

Bookings are now open for the latest, luxury studio nature cabin, situated on the sand dunes with panoramic ocean views. The open-plan, split-level, cabin has one bedroom with queen size bed, a bathroom with large modular shower, a fully equipped kitchen and lounge/dining area. Fitted with quality stainless steel appliances, reverse-cycle heating/air conditioning and of unusual contemporary design, this cabin is an amazing experience. Craftsman-made furniture, solid myrtle flooring and high, angled windows complement the ever-changing sea views.

For one couple only; unsuitable for children/infants.

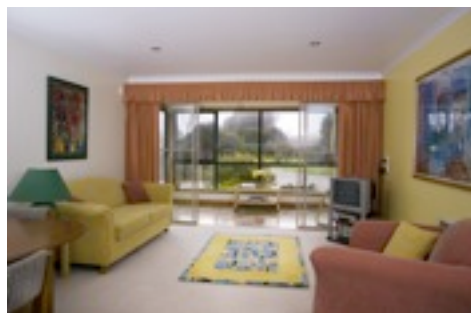


### Luxury Nature Cabin with Spa Pool - Sea Eagle

This is our top-of-the-range accommodation. Like the previous cabins for couples, it is situated on the frontal sand dune overlooking the sea. It has a full-size kitchen and lounge/dining area, a bedroom with queen size bed and a large bathroom with modular shower. In addition to quality European appliances, reverse-cycle heating/air conditioning and pebbled slate and rainforest myrtle flooring, this luxury cabin features a private courtyard and landscaped seaside garden with steps leading up to a heated spa pool set in the dunes with glorious ocean views.

Highly recommended for a honeymoon or other special occasion.

For one couple only; unsuitable for children/infants.



### Three Bedroom Spa Lodge

This spacious modern apartment is set in a beachside garden adjacent to the homestead and accommodates up to five guests in two double bedrooms, one with an adjoining single room. There is a fully equipped kitchen with dishwasher, lounge/dining area and a sun room. A television, VCR, CD player and telephone, are situated in the lounge. The bathroom has a double spa bath, shower and a separate toilet. All linen is provided. Heating is by underfloor electrical heating and wall heaters. An al fresco dining area with a barbecue overlooks the garden, with a bird-watching deck situated 30 metres away, next to the beach.

Accommodation is suitable for children and has wheel-chair access. Cots are not provided.